

CITY OF WOODBURY

2010 BUDGET

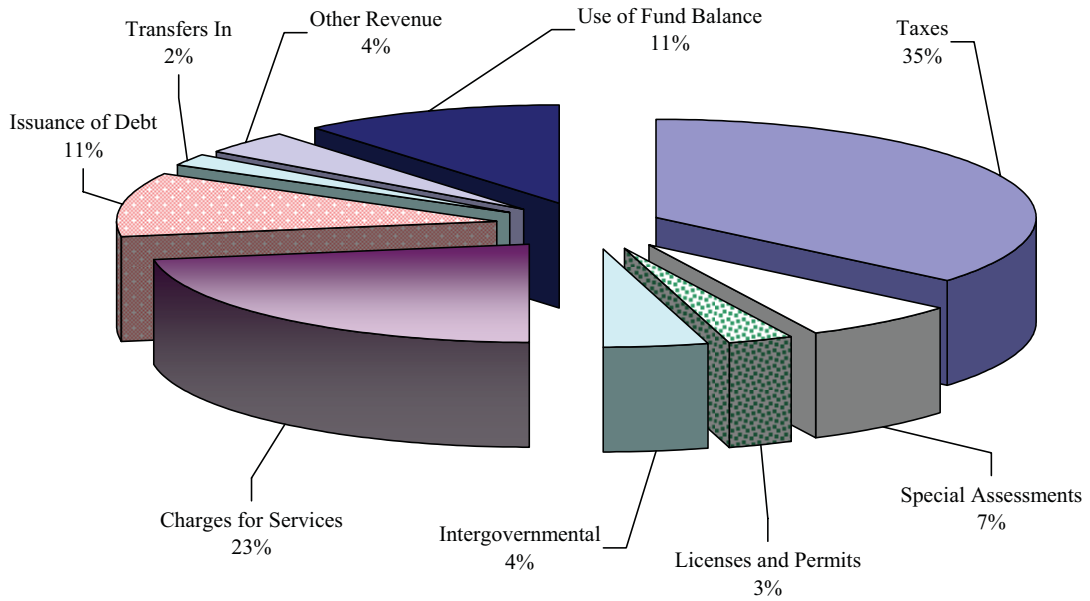
Included in this section are the following:

- Combined Statement – All Budgeted Funds

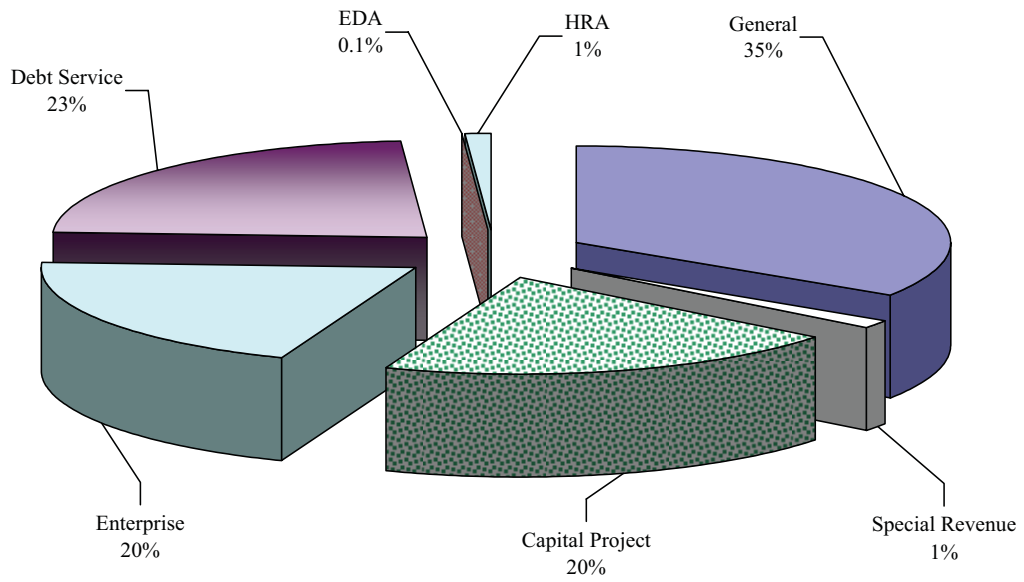
**CITY OF WOODBURY
2010 BUDGET
COMBINED STATEMENT – ALL BUDGETED FUNDS**

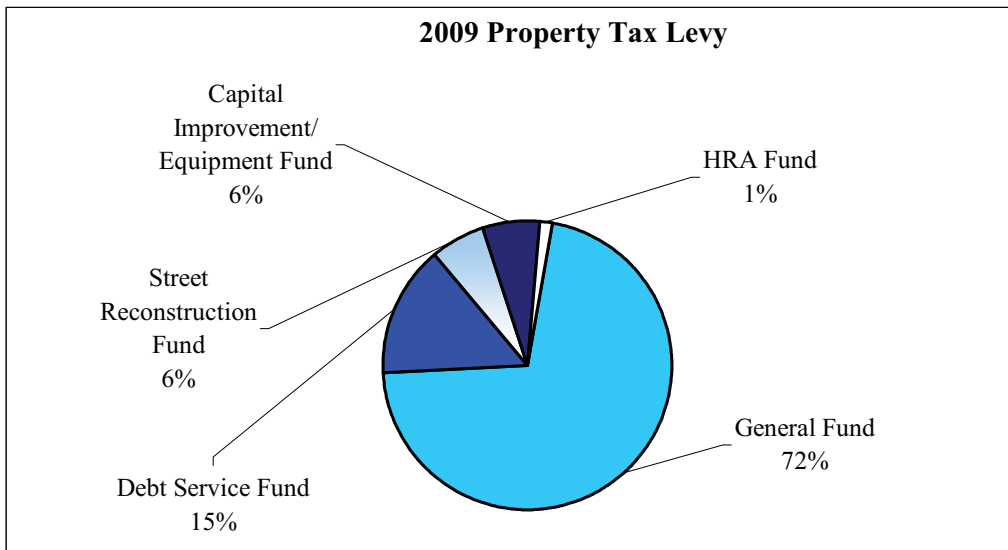
	2009 Budget	2010 Budget	Percent Change
REVENUES AND OTHER SOURCES:			
Property Taxes - City	\$ 26,364,482	\$ 27,142,990	3.0%
Less Market Value Homestead Credit	(675,000)	(695,831)	3.1%
Less Property Tax Delinquencies and Tax Court Petition Refunds	-	(547,900)	n/a
Property Taxes - HRA	350,000	350,000	0.0%
Less Market Value Homestead Credit	(10,920)	(10,920)	0.0%
Tax Increment	151,987	161,772	6.4%
Property Tax Abatement received from the County and School Districts	967,508	1,123,171	16.1%
Special Assessments	5,256,813	5,071,207	-3.5%
Park Dedication Fees	180,000	159,000	-11.7%
Licenses and Permits	2,390,117	2,092,663	-12.4%
Intergovernmental	1,665,435	3,251,317	95.2%
Market Value Homestead Credit	685,920	10,920	-98.4%
Charges for Services (User Fees)	16,716,960	17,294,495	3.5%
Other Revenues	879,069	1,021,345	16.2%
Interfund Charges	999,236	986,791	-1.2%
Investment Earnings	1,221,012	748,516	-38.7%
Proceeds from Issuance of Debt	-	8,000,000	n/a
Operating Transfers In	2,868,187	1,486,476	-48.2%
Net Use of Fund Balance	431,752	8,422,870	1850.9%
Total Revenues and Other Sources	\$ 60,442,558	\$ 76,068,882	25.9%
EXPENDITURES BY FUND:			
General	\$ 25,915,225	\$ 25,972,624	0.2%
Special Revenue:			
Park Dedication Fee	9,000	8,275	-8.1%
Administration Fee	520,000	420,500	-19.1%
Police Activities	80,305	86,350	7.5%
Fire Relief Municipal Contribution Stabilization	315,000	462,861	46.9%
Capital Project:			
Street Reconstruction / Maintenance Fund	2,969,492	6,158,847	107.4%
Capital Improvement	2,342,460	9,329,243	298.3%
Closed Debt Service	1,315,674	-	-100.0%
Enterprise Funds:			
Water and Sewer Utility	8,056,344	8,152,309	1.2%
Storm Water Utility	1,603,030	2,258,822	40.9%
Street Lighting	445,800	471,069	5.7%
Emergency Medical Services	1,719,271	1,678,619	-2.4%
Ice Arena / Fieldhouse Operations	1,136,440	1,045,947	-8.0%
Golf Course Operations	1,564,744	1,541,367	-1.5%
Debt Service	11,518,285	17,541,461	52.3%
Economic Development Authority	77,900	77,475	-0.5%
Housing and Redevelopment Authority	853,588	863,113	1.1%
Total Expenditures by Fund	\$ 60,442,558	\$ 76,068,882	25.9%

2010 Total Revenues

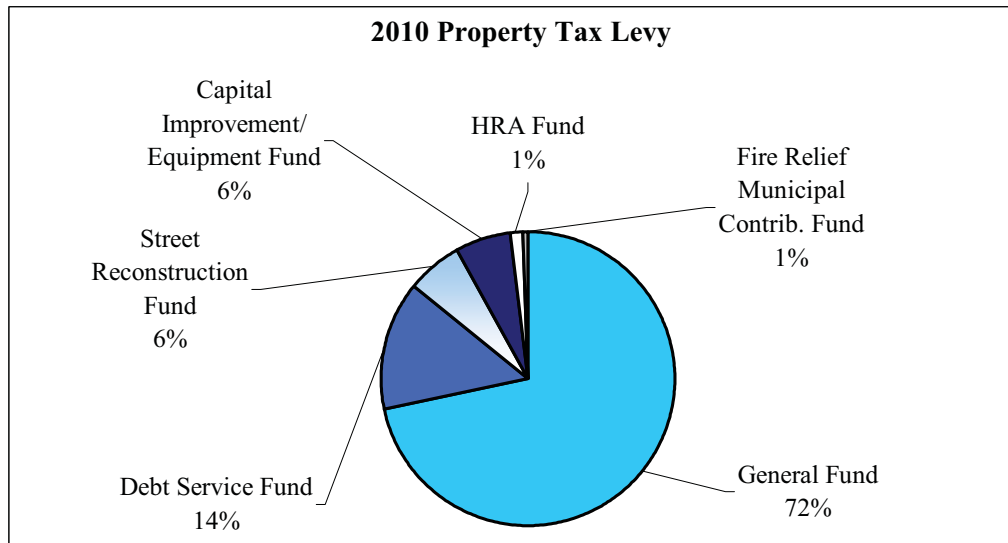


2010 Total Expenditures



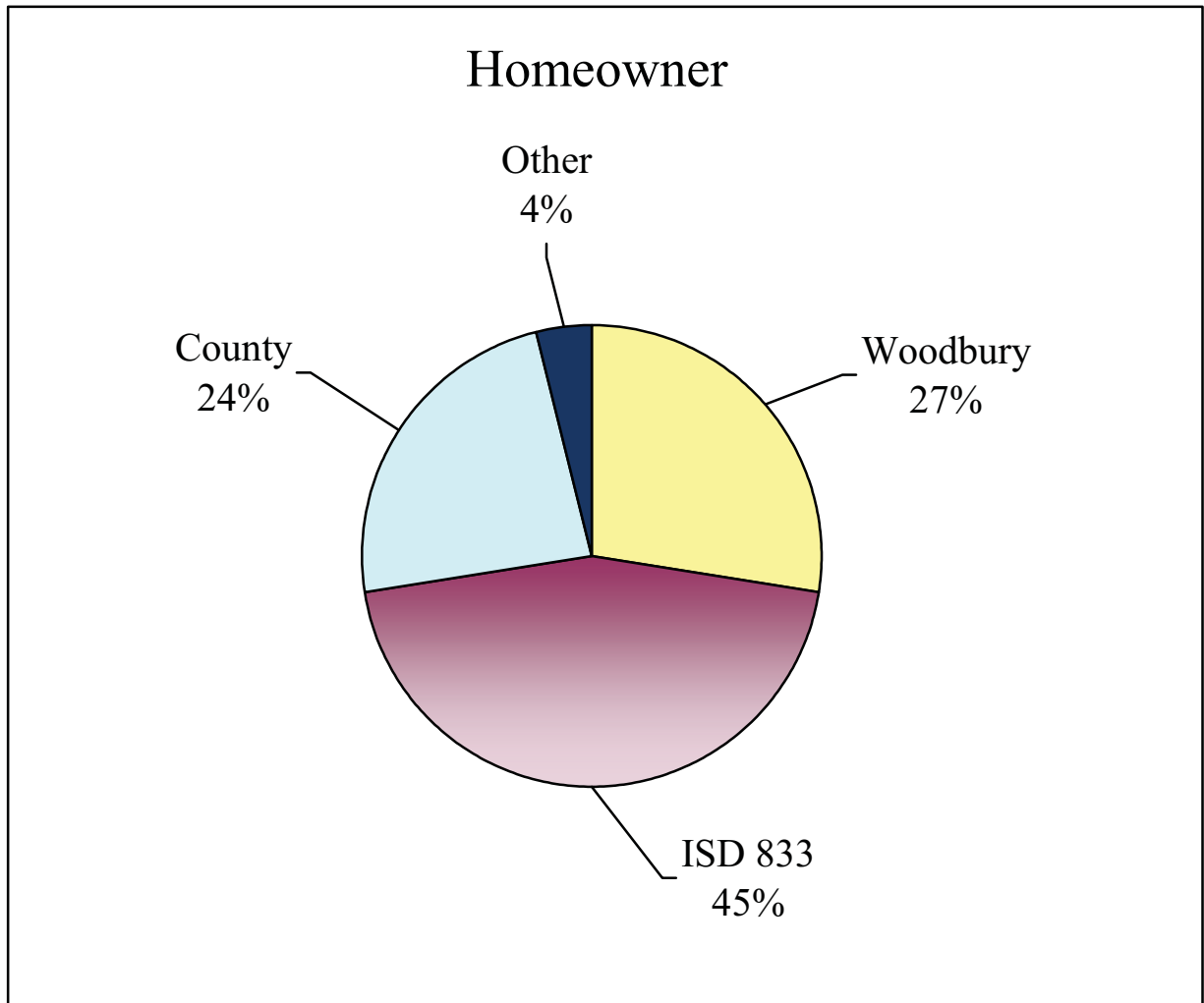


2009 Property Tax Levy	Amount
General Fund	\$ 19,099,446
Fire Relief Municipal Contribution Fund	-
Capital Improvement/Equipment Fund	1,725,102
Street Reconstruction Fund	1,638,995
Debt Service Fund	3,900,939
HRA Fund	350,000
	\$ 26,714,482

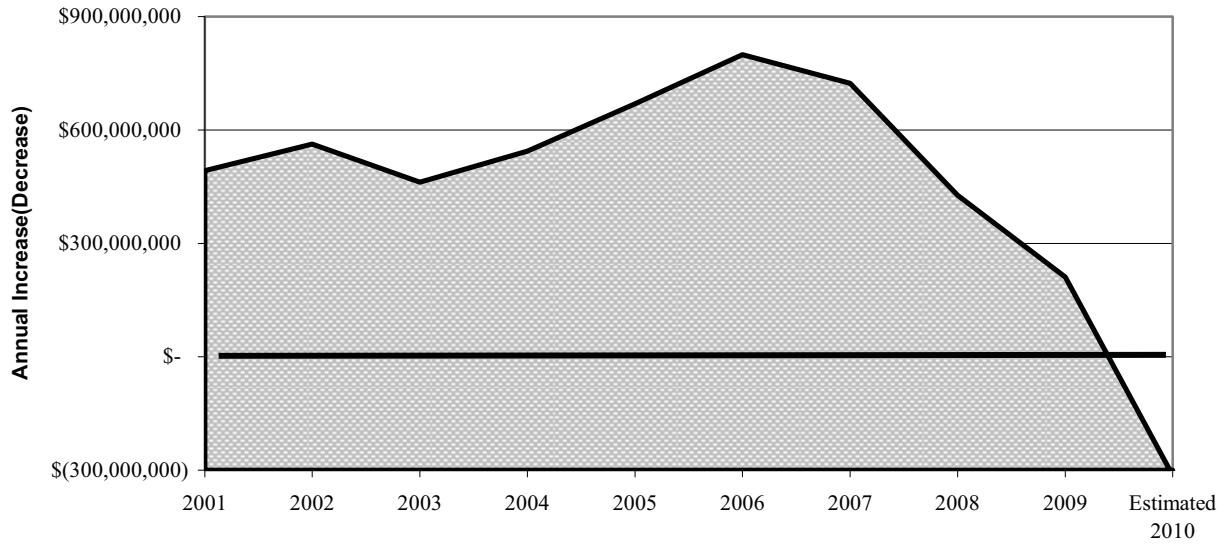


2010 Property Tax Levy	Amount
General Fund	\$ 19,727,954
Fire Relief Municipal Contribution Fund	150,000
Capital Improvement/Equipment Fund	1,725,102
Street Reconstruction Fund	1,638,995
Debt Service Fund	3,900,939
HRA Fund	350,000
	\$ 27,492,990

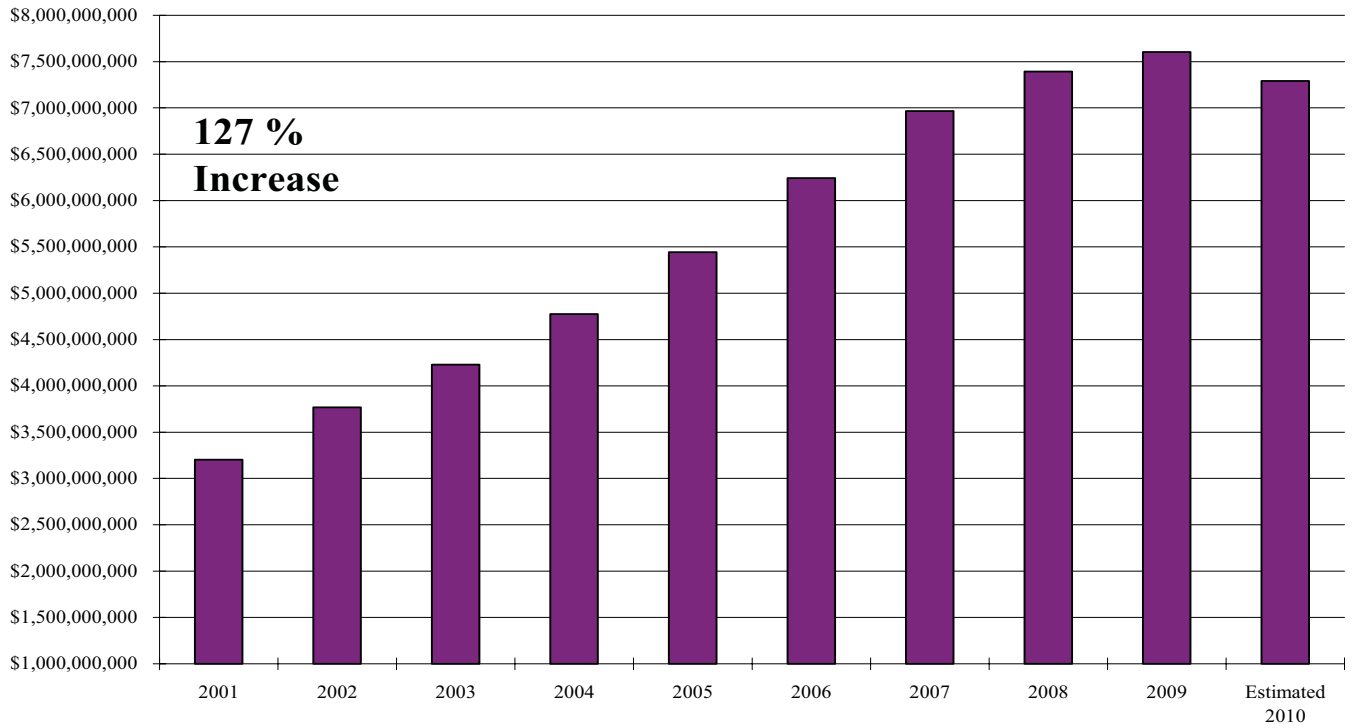
Proportionate Shares of 2009 Tax Bill



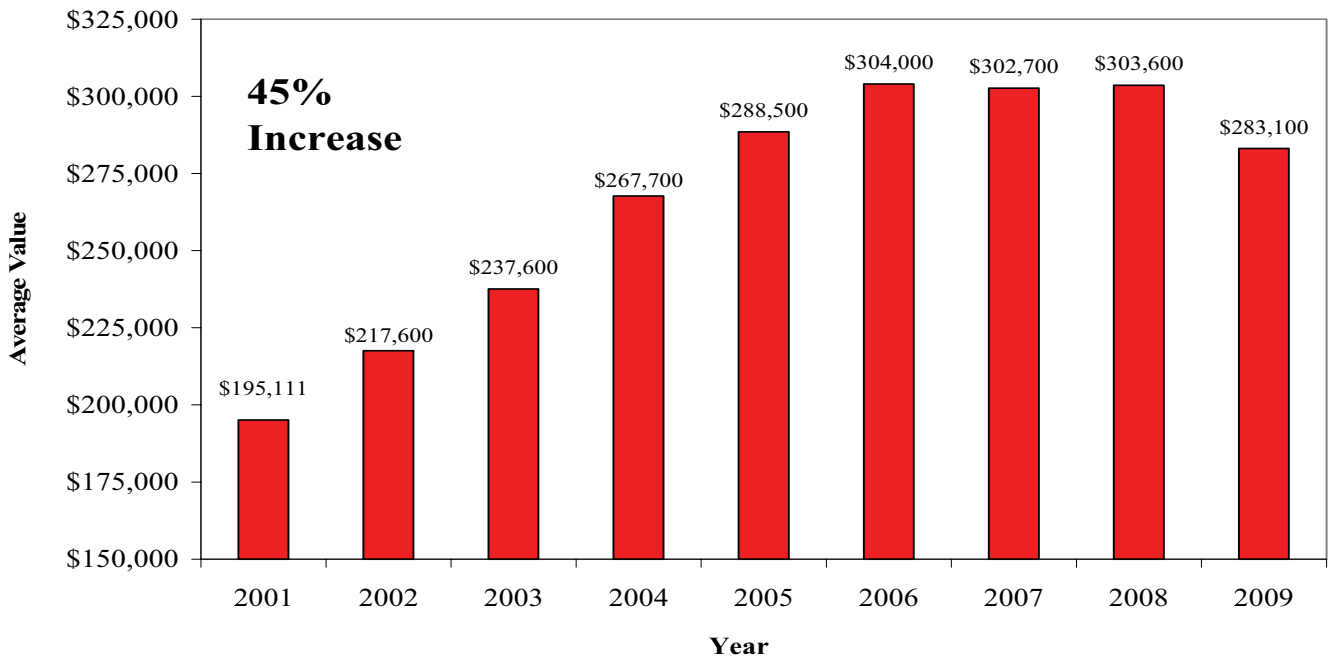
Taxable Market Value Change



Annual Taxable Market Value



Average Value of Residential Parcel in Woodbury 2001 - 2009



Growth in per Capita Value

Tax Base Per Capita

